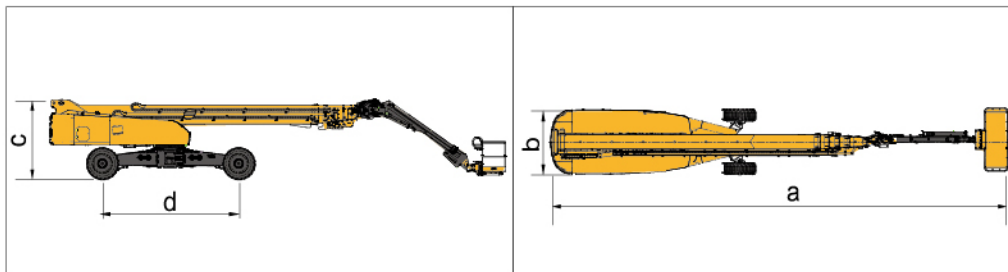


Parameter

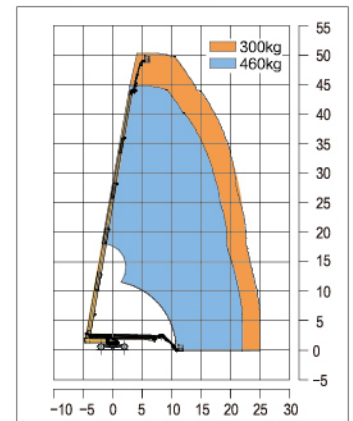
Item	Unit	XGS50K
Dimension		
a. Overall length (stowed)	mm	17460
Overall length (transportation)	mm	12550
b. Overall width	mm	2490 (Shaft retracted) / 5030 (Shaft extended)
c. Overall height	mm	3000
Platform dimension	mm	2400 × 900 × 1150
d. Wheelbase	mm	5220 (Shaft retracted) / 4590 (Shaft extended)
Max. working height	mm	50000
Max. platform height	mm	48000
Max. working range	mm	25200
Performance		
Max. load capacity	kg	300(Unrestricted) / 460(Restricted)
Walking speed (stowed)	km/h	4.5
Walking speed (elevated/extended)	km/h	0.3~0.5
Boom luffing range	°	0~80 / -45~ 75
Rotation angle of turntable	°	360 continuous
Tailswing	mm	2000
Rotation angle of platform	°	160
Min. turning radius (outside)	mm	9500 (Axle retracted) / 6600 (Axle extended)
Min. turning radius (inside)	mm	7600 (Axle retracted) / 2800 (Axle extended)
Overall weight	kg	24440
Max. gradeability (counterweight upwards)	%	45
Max. gradeability (counterweight downwards)	%	30
Power source		
Engine model	/	Yuchai YC4FA85-T300
Rated power	kW	62.5
Hydraulic tank capacity	L	250
Hydraulic system capacity	L	420
Fuel tank capacity	L	200

Options

Anti extrusion device / Tool tray / Working light / Anti-squeeze hand-assisted track of the platform
Half-height mesh platform / Aircraft protection device / Anti-falling assembly



Work Curve Graph



Global service hotline: 400 110 9999

