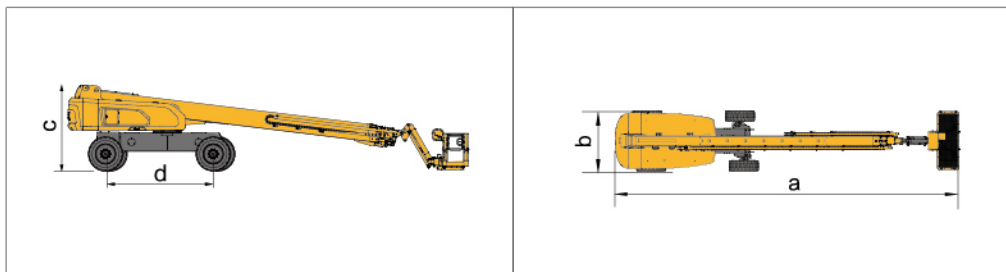


Parameter

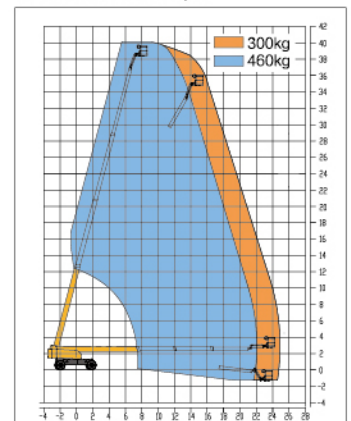
Item	Unit	XGS40K
Dimension		
a. Overall length (stowed)	mm	14060
Overall length (transportation)	mm	12500
b. Overall width	mm	2490 (Shaft retracted) / 3800 (Shaft extended)
c. Overall height	mm	3000
Platform dimension	mm	2400 × 900 × 1150
d. Wheelbase	mm	3800
Max. working height	mm	40200
Max. platform height	mm	38200
Max. working range	mm	24900
Performance		
Max. load capacity	kg	300 (Unrestricted) / 460 (Restricted)
Walking speed (stowed)	km/h	5
Walking speed (elevated/extended)	km/h	0.5
Boom luffing range	°	-6.5~ 75
Rotation angle of turntable	°	360 continuous
Tailswing	mm	2355 (Shaft retracted) / 1700 (Shaft extended)
Rotation angle of platform	°	160
Min. turning radius (outside)	mm	6800 (Axle retracted) / 5800 (Axle extended)
Min. turning radius (inside)	mm	4400 (Axle retracted) / 2400 (Axle extended)
Overall weight	kg	21460
Max. gradeability (counterweight upwards)	%	40
Max. gradeability (counterweight downwards)	%	30
Power source		
Engine model	/	Yuchai YC4FA75-T300 / Cummins QSF2.8t3TC71 / Yuchai YCF3075-T480
Rated power	kW	55 / 53 / 55.8
Hydraulic tank capacity	L	260
Hydraulic system capacity	L	400
Fuel tank capacity	L	180

Options

Anti extrusion device / Tool tray / Working light / Anti-squeeze hand-assisted track of the platform
Half-height mesh platform / Aircraft protection device / Anti-falling assembly



Work Curve Graph



Global service hotline: 400 110 9999

