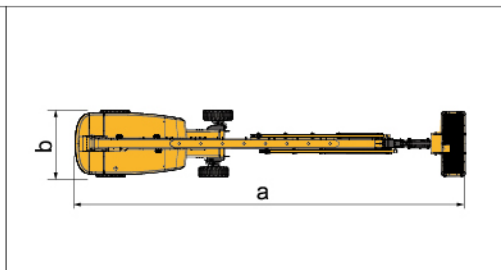
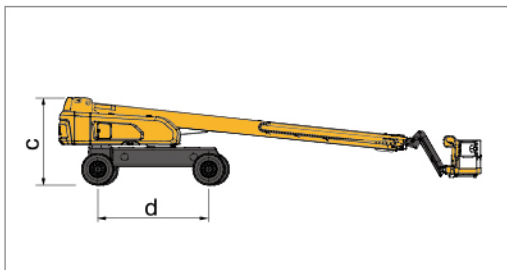


Parameter

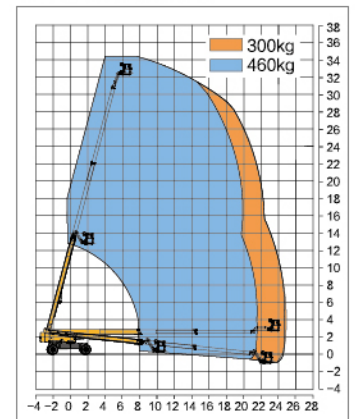
Item	Unit	XGS34K
Dimension		
a. Overall length (stowed)	mm	14400
Overall length (transportation)	mm	12700
b. Overall width	mm	2490 (Shaft retracted) / 3800 (Shaft extended)
c. Overall height	mm	3000
Platform dimension	mm	2400 × 900 × 1150
d. Wheelbase	mm	3800
Max. working height	mm	34300
Max. platform height	mm	32300
Max. working range	mm	24700
Performance		
Max. load capacity	kg	300 (Unrestricted) / 460 (Restricted)
Walking speed (stowed)	km/h	5
Walking speed (elevated/extended)	km/h	0.6
Boom luffing range	°	-6~ 75
Rotation angle of turntable	°	360 continuous
Tailswing	mm	2085 (Shaft retracted) / 1430 (Shaft extended)
Rotation angle of platform	°	160
Min. turning radius (outside)	mm	6800 (Axle retracted) / 5800 (Axle extended)
Min. turning radius (inside)	mm	4400 (Axle retracted) / 2400 (Axle extended)
Overall weight	kg	19300
Max. gradeability (counterweight upwards)	%	45
Max. gradeability (counterweight downwards)	%	45
Power source		
Engine model	/	Cummins QSF2.8/ Yuchai YC4FA75-T300/ Yuchai YCF3075-T480
Rated power	kW	53 / 55 / 55.8
Hydraulic tank capacity	L	260
Hydraulic system capacity	L	520
Fuel tank capacity	L	200

Options

Anti extrusion device / Tool tray / Working light / Anti-squeeze hand-assisted track of the platform
Half-height mesh platform / Aircraft protection device / Anti-falling assembly



Work Curve Graph



Global service hotline: 400 110 9999

