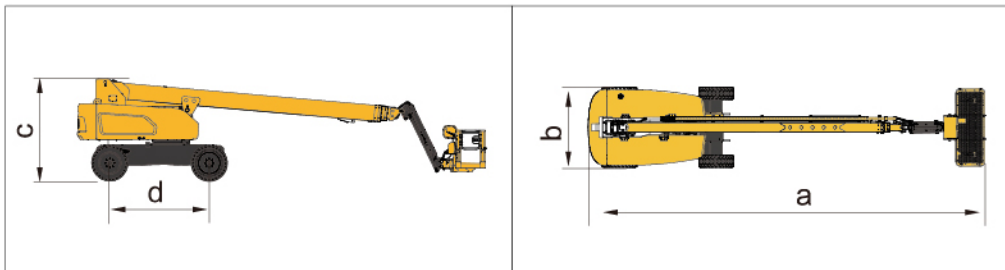


Parameter

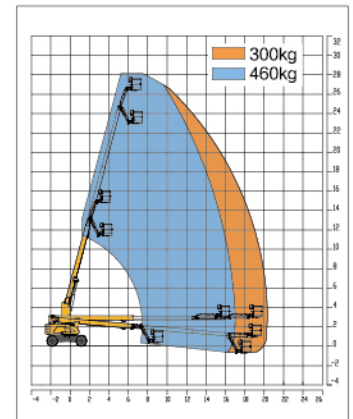
Item	Unit	XGS28K
Dimension		
a.Overall length (stowed)	mm	12300
Overall length (transportation)	mm	/
b.Overall width	mm	2490
c.Overall height	mm	3050
Platform dimension	mm	2400 × 900 × 1150
d.Wheelbase	mm	3000
Max. working height	mm	28200
Max. platform height	mm	26200
Max. working range	mm	20600
Performance		
Max.load capacity	kg	300 (Unrestricted) / 460 (Restricted)
Walking speed (stowed)	km/h	6.1
Walking speed (elevated/extended)	km/h	1
Boom luffing range	°	-5 ~ +75
Rotation angle of turntable	°	360 continuous
Tailswing	mm	1600
Rotation angle of platform	°	160
Min. turning radius (outside)	m	6700
Min. turning radius (inside)	m	3600
Overall weight	kg	16500
Max. gradeability (counterweight upwards)	%	40
Max. gradeability (counterweight downwards)	%	30
Power source		
Engine model	/	Yuchai YCF3065-T302 / Yuchai YCF3065-T482 / Cummins QSF2.8t3TC71
Rated power	kW (r/min)	48 / 48 / 53
Hydraulic tank capacity	L	210
Hydraulic system capacity	L	350
Fuel tank capacity	L	180

Options

Anti extrusion device / Tool tray / Working light / Anti-squeeze hand-assisted track of the platform
Half-height mesh platform / Aircraft protection device / Anti-falling assembly



Work Curve Graph



Global service hotline: 400 110 9999

