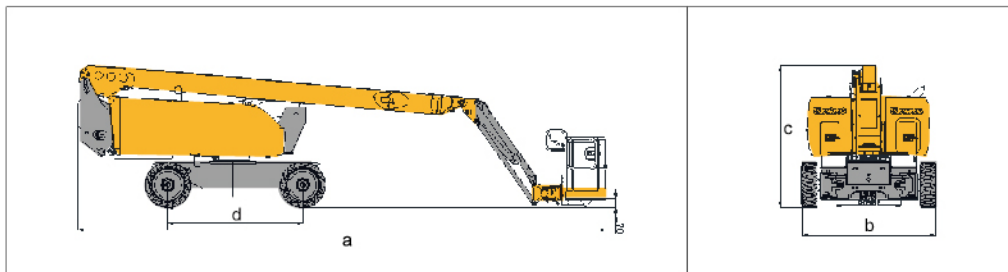


Parameter

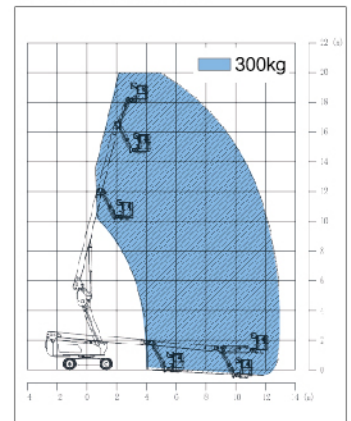
Item	Unit	XGS20K
Dimension		
a. Overall length (stowed)	mm	9800
Overall length (transportation)	mm	7400
b. Overall width	mm	2490
c. Overall height	mm	2640
Platform dimension	mm	1830 × 760 × 1150
d. Wheelbase	mm	2500
Max. working height	mm	20500
Max. platform height	mm	18500
Max. working range	mm	13200
Performance		
Max. load capacity	kg	300
Walking speed (stowed)	km/h	4.8
Walking speed (elevated/extended)	km/h	0.6
Boom luffing range	°	-5~ 76
Rotation angle of turntable	°	360 continuous
Tailswing	mm	1630
Rotation angle of platform	°	160
Min. turning radius (outside)	mm	5000
Min. turning radius (inside)	mm	3500
Overall weight	kg	8500
Max. gradeability (counterweight upwards)	%	45
Max. gradeability (counterweight downwards)	%	25
Power source		
Engine model	/	Yuchai YCF3050-T423/ Kubota V2403-M-DI-E3B
Rated power	kW	36.8
Hydraulic tank capacity	L	120
Hydraulic system capacity	L	240
Fuel tank capacity	L	90

Options

Tool tray / Working light



Work Curve Graph



Global service hotline: 400 110 9999

