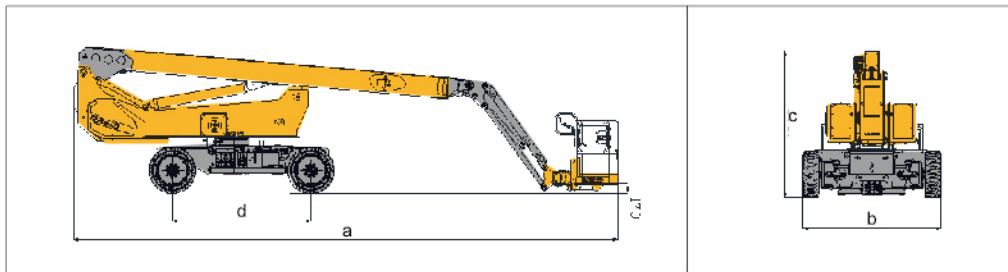


Parameter

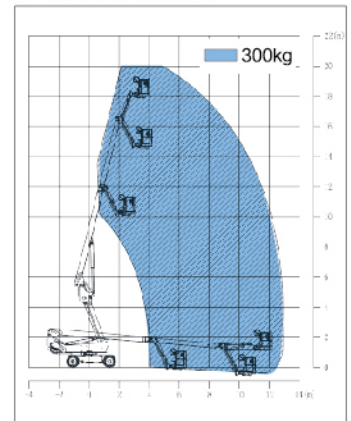
Item	Unit	XGS20ACK	XGS20ACK-Li
Dimension			
a.Overall length (stowed)	mm	9800	
Overall length (transportation)	mm	7400	
b.Overall width	mm	2490	
c.Overall height	mm	2640	
Platform dimension	mm	1830 × 760 × 1150	
d.Wheelbase	mm	2500	
Max. working height	mm	20500	
Max. platform height	mm	18500	
Max. working range	mm	13200	
Performance			
Max.load capacity	kg	300	
Walking speed (stowed)	km/h	4.8	
Walking speed (elevated/extended)	km/h	0.6	
Boom luffing range	°	-65 ~ 70	
Rotation angle of turntable	°	360 continuous	
Tailswing	mm	1630	
Rotation angle of platform	°	160	
Min. turning radius (outside)	mm	5000	
Min. turning radius (inside)	mm	3500	
Overall weight	kg	8600 / 8350	
Max. gradeability (counterweight upwards)	%	45	
Max. gradeability (counterweight downwards)	%	30	
Power source			
Power source	/	420 / 48 DC	404 / 52 lithium battery
Power unit	kW		12 / 31 AC
Auxiliary power unit	L		1.9 / 12 DC
Travel motor	L		3.3 / 32 AC

Options

Tool tray / Working light



Work Curve Graph



Global service hotline: 400 110 9999

