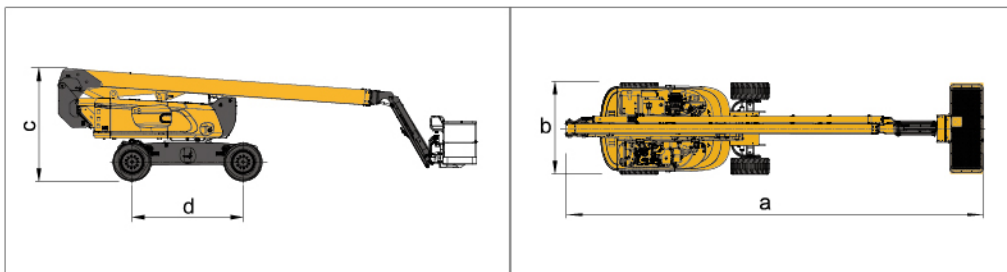


Parameter

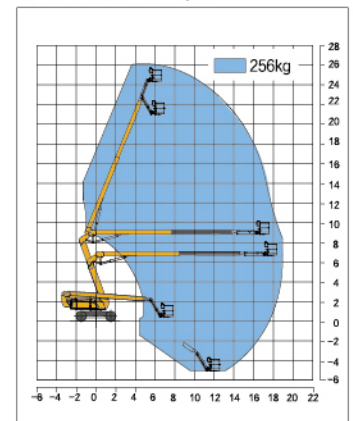
| Item | Unit | XGA26K | XGA26K1 |
|--|---------|---|-------------------------------------|
| Dimension | | | |
| a.Overall length(stowed) | mm | 11760 | 11760 |
| Overall length(transportation) | mm | 9900 | 9900 |
| b.Overall width | mm | 2490 | 2490 |
| c.Overall height | mm | 2950 | 2950 |
| Platform dimension | mm | 2400 × 900 × 1150 | 2400 × 900 × 1150 |
| d.Wheelbase | mm | 3000 | 3000 |
| Max. working height | m | 26.6 | 26.6 |
| Max. platform height | m | 24.6 | 24.6 |
| Max. working range | m | 19.5 | 19.5 |
| Performance | | | |
| Max.load capacity | kg | 256 | 150(Unrestricted) / 256(Restricted) |
| Primary boom luffing range | ° | -1~ +70 | -1~ +70 |
| Telescopic boom luffing range | ° | -35~ +68 | -35~ +68 |
| Turntable rotation angle | ° | 360 continuous | 360 continuous |
| Tailswing of turntable (boom lift up) | mm | 1330 | 1330 |
| Platform rotation angle | ° | 160 | 160 |
| Total weight | kg | 18100 | 16500 |
| Travel speed (stowed) | km/h | 5 | 5 |
| Travel speed (elevated/extended) | km/h | 0.6 | 0.6 |
| Min.turning radius (4WS) | m | < 4.4 (outside) | < 4.4 (outside) |
| Min.ground clearance | mm | 380 | 380 |
| Max.gradeability (counterweight upwards) | % | 45% (24°) | 45% (24°) |
| Power source | | | |
| Tire specification | / | 18-625 | 18-625 |
| Engine model | / | Yuchai YCF3065-T482 V2607-CR-TE5B-XCM-2S | Yuchai YCF3065-T482 |
| Rated Power | kw(rpm) | 48(2400) / 48(2400) | 48(2400) |
| Hydraulic tank capacity | L | 150 | 150 |
| Fuel tank capacity | L | 180 | 180 |
| Hydraulic system capacity | L | 300 | 300 |

Options

Half-height mesh platform / Anti-squeeze hand-assisted track of the platform / Aircraft protection device
Anti-falling assembly / Anti extrusion device / Tool tray / Working light



Work Curve Graph



Global service hotline: 400 110 9999

