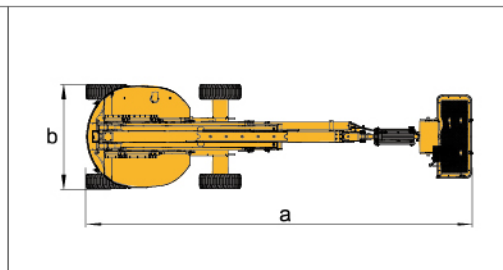
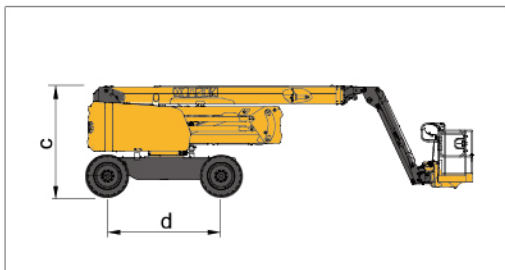


## Parameter

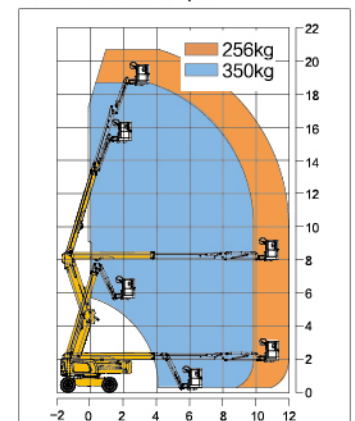
Item	Unit	XGA20K
<b>Dimension</b>		
a.Overall length(stowed)	mm	8520
Overall length(transportation)	mm	6260
b.Overall width	mm	2300
c.Overall height	mm	2400
Platform dimension	mm	1830 × 760 × 1150
d.Wheelbase	mm	2500
Max. working height	mm	20630
Max. platform height	mm	18630
Max. working range	mm	12080
<b>Performance</b>		
Max.load capacity	kg	256 (Unrestricted) / 350 (Restricted)
Travel speed(stowed)	km/h	5.5
Travel speed(elevated/extended)	km/h	0.6
Primary boom luffing range	°	0~72
Telescopic boom luffing range	°	0~73
Jib luffing range	°	/
Turntable rotation angle	°	360 continuous
Tailswing	mm	540
Platform rotation angle	°	160
Min.turning radius(outside)	mm	5000
Min.turning radius(inside)	mm	2300
Total weight	kg	9900
Max.gradeability(counterweight upwards)	%	30
Max.gradeability(counterweight downwards)	%	45
<b>Power source</b>		
Engine model	/	Yuchai YCF3050-T302 / Yuchai YCF3050-T423 / Kubota v2403-M-DI-ET04e
Rated power	kw	36.8 / 36.8/ 36
Hydraulic tank capacity	L	120
Hydraulic system capacity	L	240
Fuel tank capacity	L	90

## Options

Tool tray / Working light / Anti-collision device



Work Curve Graph



Global service hotline: 400 110 9999

