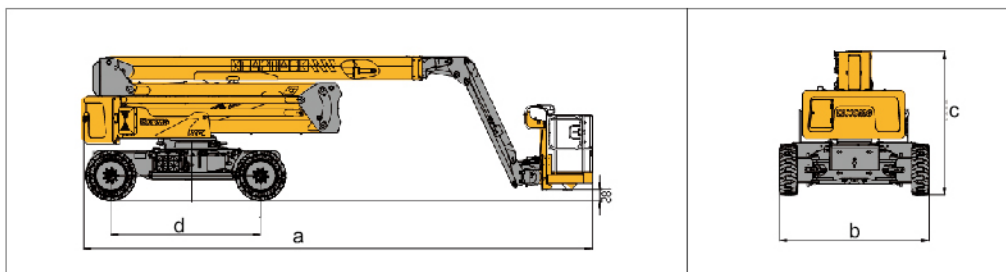


Parameter

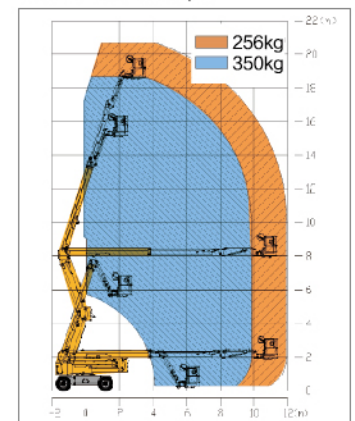
Item	Unit	XGA20ACK	XGA20ACK-Li
Dimension			
a.Overall length(stowed)	mm	8490	
Overall length(transportation)	mm	8490	
b.Overall width	mm	2490	
c.Overall height	mm	2380	
Platform dimension	mm	1830 × 760 × 1150	
d.Wheelbase	mm	2500	
Max. working height	mm	20600	
Max. platform height	mm	18600	
Max. working range	mm	11980	
Performance			
Max.load capacity	kg	256 (Unrestricted) / 350 (Restricted)	
Travel speed (stowed)	km/h	4.8	
Travel speed (elevated/extended)	km/h	0.6	
Primary boom luffing range	°	0~72	
Telescopic boom luffing range	°	0~73	
Jib luffing range	°	/	
Turntable rotation angle	°	360 continuous	
Tailswing	mm	560	
Platform rotation angle	°	160	
Min.turning radius(outside)	mm	5000	
Min.turning radius(inside)	mm	3500	
Total weight	kg	9100	
Max.gradeability (counterweight upwards)	%	30	
Max.gradeability (counterweight downwards)	%	45	
Power source			
Battery	Ah/V	(390~420) / 48 DC (Standard)	(400~420) / 48 Lithium battery(Options)
Power unit	Kw/V	12 / 32 AC	12 / 32 AC
Auxiliary power unit	Kw/V	2.3 / 12 DC	2.3 / 12 DC
Travel motor	Kw/V	3.3 / 32 AC	3.3 / 32 AC

Options

Tool tray / Working light



Work Curve Graph



Global service hotline: 400 110 9999

