

Parameter

Item	Unit	XGA18ACK
Dimension		
a.Overall length(stowed)	mm	7575
Overall length(transportation)	mm	7575
b.Overall width	mm	2320
c.Overall height	mm	2350
Platform dimension	mm	1800 × 760 × 1150
d.Wheelbase	mm	2360
Max. working height	mm	18000
Max. platform height	mm	16000
Max. working range	mm	10100

Performance

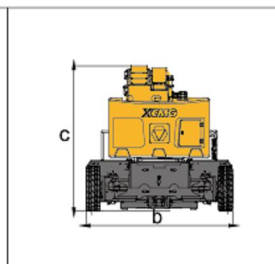
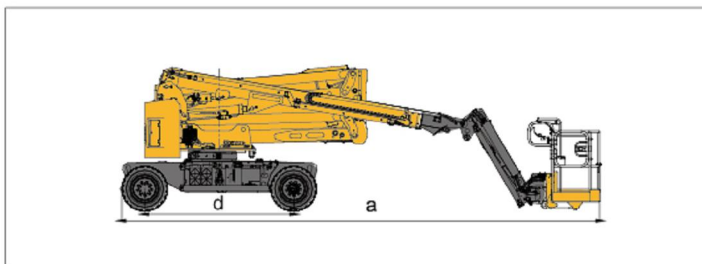
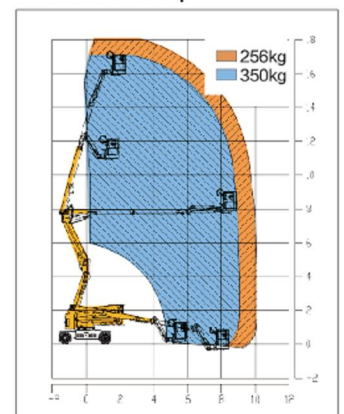
Max.load capacity	kg	256 (Unrestricted) / 350 (Restricted)
Travel speed (stowed)	km/h	4.8
Travel speed (elevated/extended)	km/h	0.6
Primary boom luffing range	°	0~65
Telescopic boom luffing range	°	-11~75
Jib luffing range	°	/
Turntable rotation angle	°	355
Tailswing	mm	0
Platform rotation angle	°	160
Min.turning radius(outside)	mm	4.7
Min.turning radius(inside)	mm	/
Total weight	kg	8600
Max.gradeability (counterweight upwards)	%	30
Max.gradeability (counterweight downwards)	%	25

Power source

Battery	Ah/V	(390~420) / 48 DC(Standard)	(400~420) / 48 Lithium battery(Options)
Power unit	Kw/V	12 / 32 AC	12 / 32 AC
Auxiliary power unit	Kw/V	2.3 / 12 DC	2.3 / 12 DC
Travel motor	Kw/V	3.3 / 32 AC	3.3 / 32 AC

Options

Tool tray / Working light


Work Curve Graph

Global service hotline: 400 110 9999
